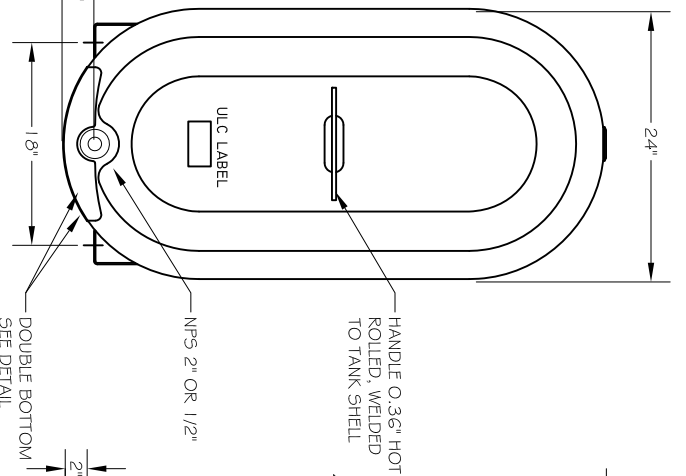


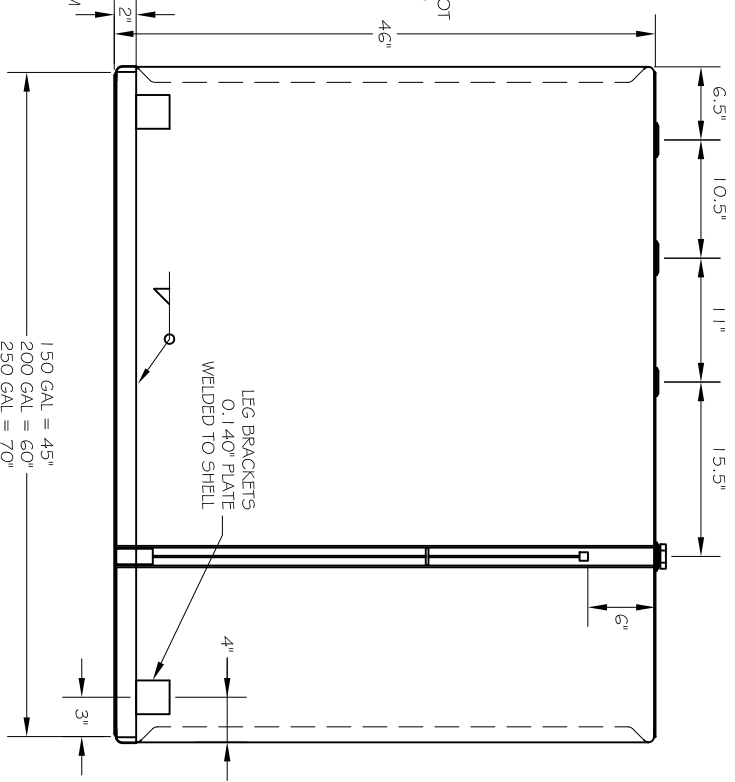
**DOUBLE BOTTOM & INTERSTITIAL MONITORING DETAIL**

NTS



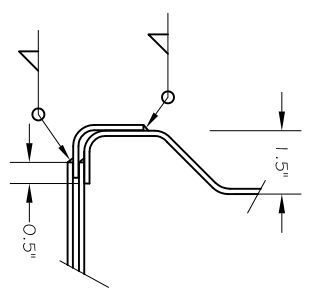
**END VIEW**

NTS



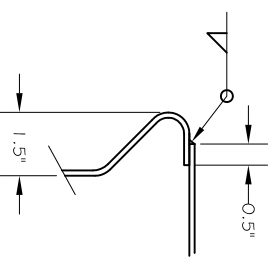
**ELEVATION VIEW**

NTS



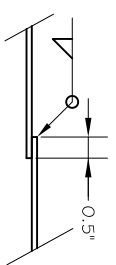
**DOUBLE BOTTOM JOINT**

NTS



**HEAD JOINT**

NTS



**SHELL JOINT**

NTS

CHECK	
<b>REVIEW STATUS</b>	
<input type="checkbox"/>	FULLY APPROVED AS IS, PROCEED WITH FABRICATION.
<input type="checkbox"/>	REVISE AS NOTED, RESUBMITTAL NOT REQUIRED, PROCEED WITH FABRICATION.
<input type="checkbox"/>	REVISE AS NOTED AND RESUBMIT FOR APPROVAL, DO NOT PROCEED WITH FABRICATION.

WELD THICKNESS = SHELL THICKNESS

MATERIAL SPECIFICATION ASTM A1011  
STEEL MINIMUM THICKNESS 2.5 MM

**ARICHAT METAL FABRICATION LTD.**

5005 HWY 320, PO BOX 4000  
ARICHAT, NS B0E 1A0  
PH: (902) 226-0055  
FX: (902) 226-0415

TITLE:  
STANDARD TANK DRAWING

TANK SIZE:  
150 - 250 GAL

ULC STANDARD:  
SG02-14

DRAWING #:  
150-250-DB-DOMESTIC

REV #:  
2

BY: GL

DATE: DDMMYY  
10/23/17

SCALE (LTR):  
NOTED

PER: \_\_\_\_\_ DATE: \_\_\_\_\_