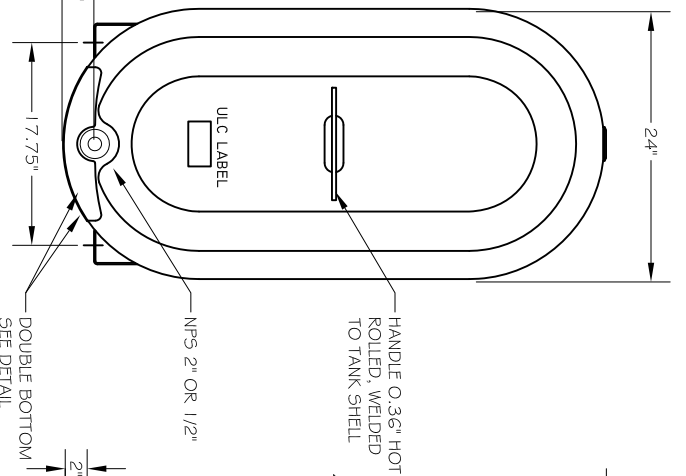
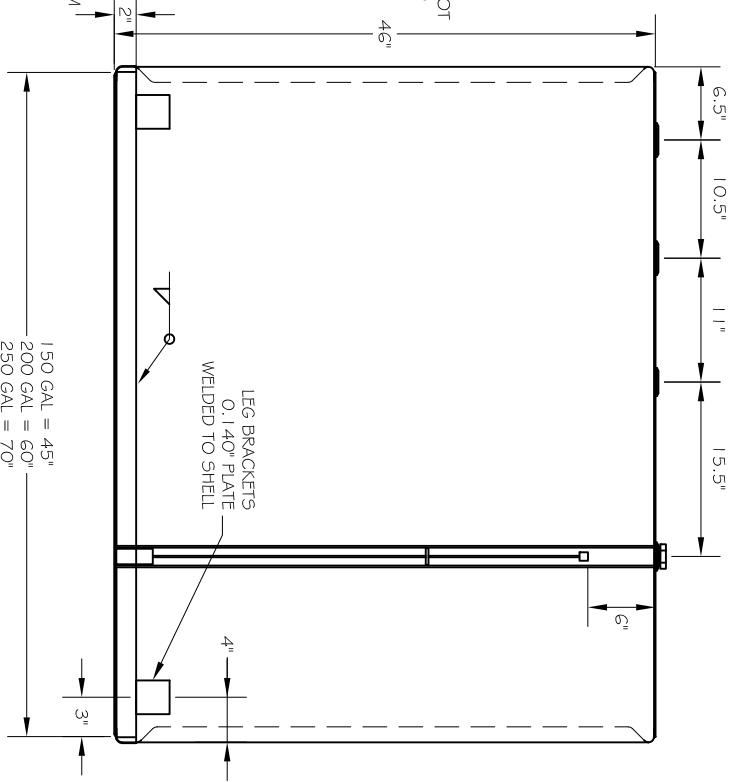


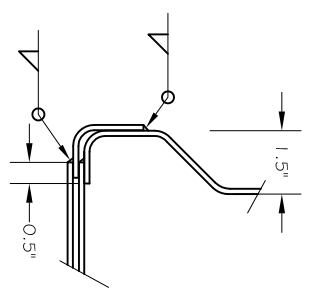
**DOUBLE BOTTOM & INTERSTITIAL MONITORING DETAIL**  
NTS



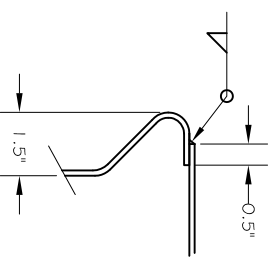
**END VIEW**  
NTS



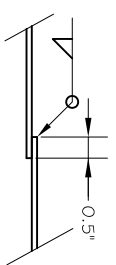
**ELEVATION VIEW**  
NTS



**DOUBLE BOTTOM JOINT**  
NTS



**HEAD JOINT**  
NTS



**SHELL JOINT**  
NTS

CHECK	
<input type="checkbox"/>	FULLY APPROVED AS IS, PROCEED WITH FABRICATION.
<input type="checkbox"/>	REVISE AS NOTED, RESUBMITTAL NOT REQUIRED, PROCEED WITH FABRICATION.
<input type="checkbox"/>	REVISE AS NOTED AND RESUBMIT FOR APPROVAL, DO NOT PROCEED WITH FABRICATION.

**REVIEW STATUS**

WELD THICKNESS = SHELL THICKNESS  
MATERIAL SPECIFICATION ASTM A1011  
STEEL MINIMUM THICKNESS 2.5 MM

**ARICHAT METAL FABRICATION LTD.**

5005 HWY 320, PO BOX 4000  
ARICHAT, NS B0E 1A0  
PH: (902) 226-0055  
FX: (902) 226-0415

TITLE:  
STANDARD TANK DRAWING

TANK SIZE:  
150 - 250 GAL ULC STANDARD:  
SG02-14

DRAWING #:  
150-250-DB-DOMESTIC 17.75

BY: GL DATE: DDMMYY 11/01/17 SCALE (LTR): NOTED  
REV #: 3